

Vol. 18, No. 6 December 2015

Lakeland currents

Bi-monthly
news magazine

Happy Holidays!



Dream to Reality

page 2



YOUR NEIGHBORHOOD REAL ESTATE PROFESSIONAL

Cat Wright // REALTOR®

930 S. White Station Road // Memphis, TN 38117

Office: 901.261.7900 // Cell: 901.494.7450

cat.wright14@yahoo.com // www.kw.com

EACH OFFICE IS INDEPENDENTLY OWNED AND OPERATED

kw

**KELLERWILLIAMS.
REALTY**

BULK RATE
U.S. Postage

PAID

Arlington, TN 38002
Permit No. 18

CONTENTS:

>> Christmas Festival – page 5

>> LES Play – page 6

>> Sports Teams – page 13

>> City Planning – page 17

**RR
POSTAL
CUSTOMER
Lakeland, TN**

Historical Perspective on Lakeland Middle School

by Sam Lencke

With a vision of preserving the character of their land and the environment, Jones-Gilliland Group, LLC members signed final closing documents Oct. 23 with Lakeland School System (LSS) representatives that conveyed ownership of 94-acres to the school system. The land was sold to LSS for \$1 million and will be the location for the new Lakeland Middle School scheduled to open in August 2018. Long-term plans allow for a high school to be built on the site as well.

The land chosen by LSS has been in the family of Rudolph Jones for over 140 years. It is bounded by U.S. Highway 70 on the south, Old Brownsville Road on the north, Canada Road on the west and Scott's Creek on the east. Rudolph and his wife Susan, along with Rudolph's sister Tandy Gilliland have long had a vision of how they wanted to develop their 850+ acres of land in Lakeland.

The first elected school board for Lakeland is credited with having the vision for additional school buildings and approving the 94-acre site for construction. They are Kevin Floyd, chair, Laura Harrison, vice chair, Teresa Henry, Kelley Hale and Matt Wright, whose term expired in September. Superintendent Dr. Ted Horrell and Kevin signed the contract. Geoff Hicks was elected to the Board and took office this fall.

Renaissance Development Company of Eads president Doug Swink stated that the Jones family had no hesitation in selling part of their land when they found out that an educational facility would be built there. Doug also said that in their numerous meetings and planning sessions, the Jones family worked diligently with LSS representatives on the school site design in order to seamlessly blend the school uses with the proposed surrounding public and development uses. The family wanted to preserve the natural character of the land in conformance with the ideas contained within their vision entitled Lakeland Green Master Plan. One interesting stipulation in the land sale is that an approximately two acre area affectionately referred to by the Jones family as the 'amoeba' be left in its natural state and be set aside as an environmental study area.

Susan described her feelings by saying, "The important thing is that we are moving forward with sustainable stewardship of our family's land holdings which now include community building and education. It is important to me that the children have a wonderful and positive natural environment to learn in. I look forward to the new form of stewardship and sustainability for the land. We are looking at how we can utilize the land to serve our families and the community, and the Lakeland middle school is a welcomed addition to our vision."

Ted said, "The negotiation process to purchase the land for our school site was complex and involved, but it was also remarkable due to the mutual interest in providing the best outcome for our students and for the City of Lakeland. Both sides of the table were negotiating in the interest of their respective parties, but there was also a tremendous amount of collaboration and compromise on both sides to end up with a contract that was mutually beneficial."

Dr. Jim Mitchell, a Lakeland resident and a founding partner of Southern Educational Strategies, LLC (SES), said: "All of the parties who participated in the negotiations for this property sale understood that the construction of new schools, when surrounded by high-quality planned development, can provide a much needed sense of 'place' and identity for the Lakeland community. That understanding guided the negotiations between the individuals and organizations. A positive and professional tone was evident in every meeting."

Kevin commented, "This campus is a commitment to the children of Lakeland and an investment in the future. We are extremely excited about the opportunity this brings our children and City. It's an exciting time to be in Lakeland." ▶

About the Cover:

Pictured are members of the Lakeland School Board: Matt Wright (former), Kelley Hale, Kevin Floyd, Teresa Henry, Geoff Hicks and Laura Harrison; Superintendent Ted Horrell and Susan Jones in the center. They are standing on the Lakeland Middle School property.

Photo by Jim Willis

LAKELAND CURRENTS

Published bi-monthly by a volunteer staff with financial support from the City of Lakeland, local homeowner associations and advertising.

Treasurer: Ken Glazer

Editorial Board : Gerry Burditt, Jay Dorning, Carl Helton, Steve Laster, Sam Lencke, Steven Snow, Alexa Tutor, Paul Vandiver, Jim Willis and Wesley Wright

Editor: Sherrye Willis
sjwmpshs@comcast.net, 291-4125

Graphic Layout: Disciple Design

Printing: HOT Graphics & Printing, Inc.

For advertising, contact:
Ken Glazer 373-9391,
glazerk63@gmail.com or
Paul Vandiver 606-2580,
paul.vandiver@anytimefitness.com

Circulation:
6,100+ homes and businesses.

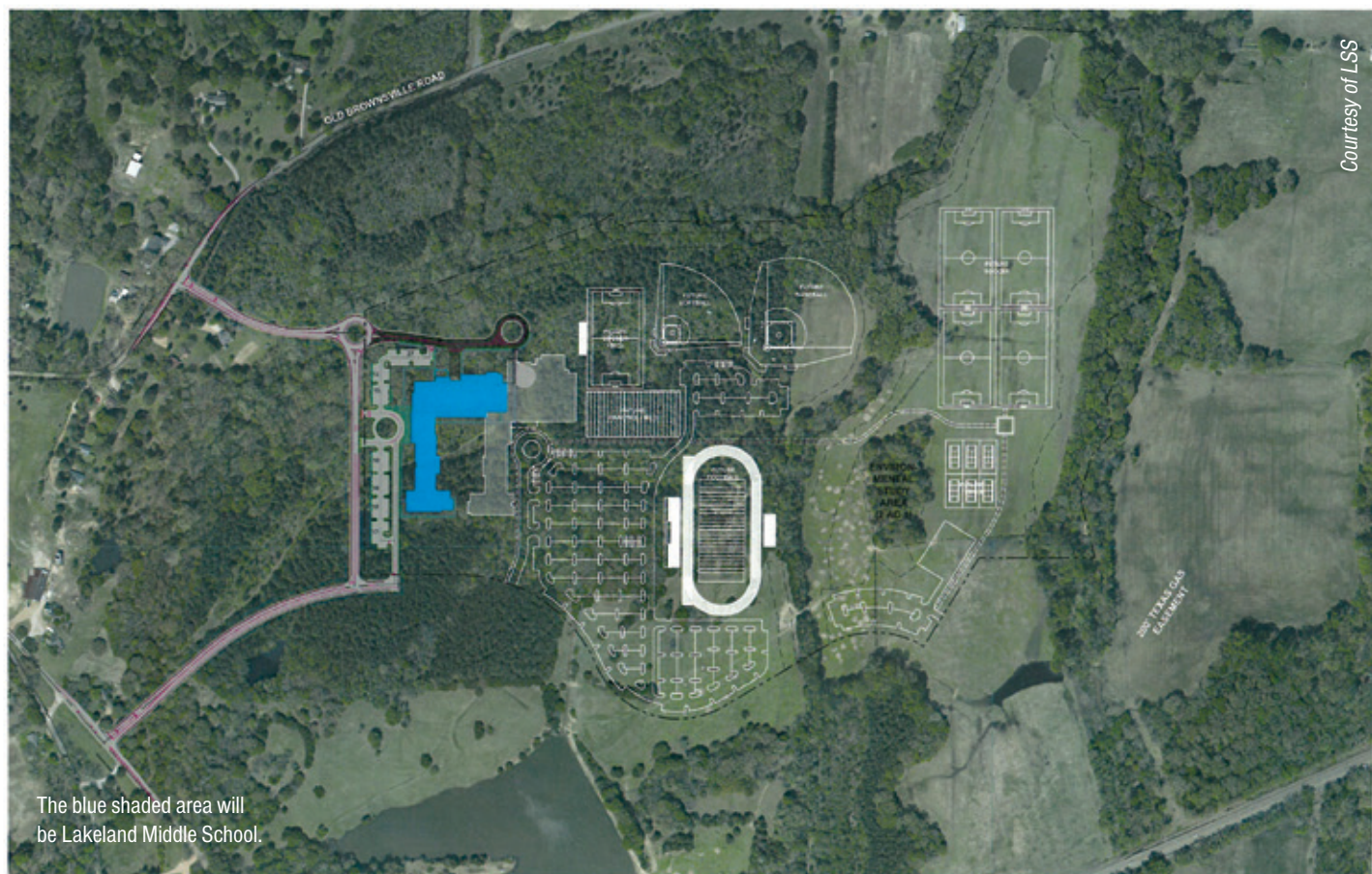
Also available at Lakeland City Hall,
10001 Highway 70.



/LakelandCurrents



@LakelandTNNews



Courtesy of LSS

New Construction of

11-9-2015

LAKELAND MIDDLE SCHOOL

Lakeland TN 38002



Renaissance Group

architecture • engineering • planning • interiors

9700 Village Circle, Suite 100, Lakeland, TN 38002 | 601.332.3100 | www.rgroup.biz

In developing their land around the school site, the Jones family's desire is to save as much as 50 percent of the land as designated natural resource preservation open space. The family has invested both its time and resources in working with renowned architect/urban planner Andrés Duany and prominent conservation planner Randall Arendt in the master planning for the future uses of its land holdings. Andrés is a pioneer in the New Urbanism Walkable Community planning concept, and Randall is considered a father of the "Smart Growth" system for cities.

In 2006, the Jones family worked with the city of Lakeland on a project they called "Lakeland Green." That study, which became the guiding principles for the aforementioned Lakeland Green Master Plan, was presented in a series of public meetings in 2006 called a charrette and was based on the principles of Smart Growth. This was the first time that both renowned planners collaborated on a large-scale master plan of development. The family is now working on revised plans that will incorporate the school and hopes to have the first phases of its developments completed when the middle school opens in August 2018. Doug Swink commented, "The Jones family has invested in a community development vision that past generations and those to come can be very proud of."

A2H and the Renaissance Group of Lakeland (not affiliated with Renaissance Development) have been retained as architectural and engineering designers for the new middle school and the land.

Ted stated, "We will do a formal groundbreaking ceremony once we have accepted a bid for building construction. This will probably be some point in early May of 2016 at the absolute soonest."

LSS currently has only one school, the K-5 Lakeland Elementary (LES). The City's middle and high school students presently attend schools in Arlington and Bartlett through inter-local agreements with those systems. When the new middle school opens, fifth grade students will be moved from LES to the new facility that will house grades 5-8.

WHAT DOES THAT LOAN JARGON MEAN?

You've read it or you've heard it. Lakeland is borrowing lots of money to pay for the new Lakeland Middle School. But how much is the City REALLY borrowing? And what is the interest rate?

The figures first, as reported via official documents:

SUMMARY	
Par Amount:	\$20,000,000.00
Original Issue Premium	\$2,499,980.70
Total Proceeds	\$22,499,980.70

The winning bidder was Key Banc Capital Markets

"NOTES" DEBT SERVICES				
Period Ending	Principal	Coupon	Interest	Debt Service
3/1/2016	–	–	–	386,627.08
3/1/2017	1,370,000	2.00%	843,550.00	2,216,150.00
3/1/2018	1,400,000	2.00%	816,150.00	2,216,150.00
3/1/2019	1,425,000	2.00%	788,150.00	2,213,150.00
3/1/2020	1,455,000	5.00%	759,650.00	2,214,650.00
3/1/2021	1,530,000	3.00%	686,900.00	2,216,900.00
3/1/2022	1,575,000	5.00%	641,000.00	2,216,000.00
3/1/2023	1,655,000	5.00%	562,250.00	2,217,250.00
3/1/2024	1,735,000	5.00%	479,500.00	2,214,500.00
3/1/2025	1,820,000	5.00%	392,750.00	2,212,750.00
3/1/2026	1,915,000	5.00%	301,750.00	2,216,750.00
3/1/2027	2,010,000	5.00%	206,000.00	2,216,000.00
3/1/2028	2,110,000	5.00%	105,500.00	2,215,500.00
	20,000,000		6,969,777.08	26,969,777.08

Jessica Millspaugh, finance director for the City, said the Capital Outlay Notes process (CON or Notes) is very technical, but shared some details.

"The True Interest Cost (TIC – 2.8318 percent) and the Coupon Rates (rates that vary per year) are two different things," said Jessica. "PFM's (Public Financial Management) statement is the best way to explain TIC.

"In the same respect, the total principal amount (\$20,000,000) and the purchase price (\$22,499,980.70) are two different things. Having an understanding of the definitions of those key terms is the only way a layman will understand all of the numbers that are involved."

- So, of the total proceeds, \$22,499,980 is the amount the winning bidder (Key Banc) paid to the City to get an investment rate of two to five percent over the life of the loan.

- The City opted to apply the original issue premium (\$2.5 million) as additional monies toward the authorized use of the proceeds (school capital improvement).
- The 2.8318 percent rate is the rate that Key Banc bid as their TIC and was the lowest bid submitted to the City. This is the rate necessary to discount the principal and interest payments to Key Banc in exchange for the purchase price (\$22,499,980.70) received for the Notes.

And there is an explanation for the variance of the interest rate over the life of the loan.

According to PFM, "In a low interest rate environment, particularly when higher interest rates are expected in the future, bidders often offer to pay a greater amount for the securities if the securities bear a higher interest rate. All other things being equal, the purchaser or investor will earn the same yield on a security purchased at par with a prevailing market interest or coupon rate as on a security purchased at a premium bearing a higher interest or coupon rate."

Jim Atkinson, city manager, explained the Notes were sold at a competitive sale pursuant to a national advertisement to underwriters requesting bids for the Notes. The Notes were structured to provide the winning bidder with a two to five-percent annual interest rate return. All of the bidders for the Notes, including the winning bidder, submitted bids to purchase the Notes at an amount equal to the stated principal amount of the Notes (\$20M) plus an "original issue premium".

The Notes were awarded or sold to the bidder with the lowest true interest cost ("TIC") of 2.8318 percent which is the rate, compounded semi-annually, necessary to discount the principal and interest payments to the investor in exchange for the purchase price received for the Notes.

The original issue premium reflects the amount in excess of the stated principal that the bidder was willing to pay at closing in return for receiving the higher interest rate return during the term of the investment. In effect, the payment of the premium reduces the higher coupon return to a market investment rate.

The City's Notes were sold at a par amount of \$20 million and received a premium of \$2.5 million. The total debt service due on the Notes is calculated by multiplying the stated par of \$20 million by the stated coupon, which ranges from 2-5 percent, for a total of \$26,969,777.08. The City intends to apply a total of \$22.28 million towards its capital projects.

The premium received will be amortized over the life of the Notes and will result in an adjustment to the basis of the security.

Jessica added, "This type of sale structure is very common. In fact, Collierville's recent bond issuance was structured in a similar manner."

Lakeland Christmas Festival

in IH Park

Come to the IH Park and Stage to celebrate the Lakeland Christmas Festival from 6 to 8:30 p.m. Dec. 4 with music, food and Santa.

Starting at 6 p.m., Eddie Harrison and his band will play Christmas music and old standards on the recently opened outdoor stage. Coffee and hot chocolate will be served outside along with Food Geek which will bring its food truck for dinner. The Christmas Tree Lighting is scheduled for 6:20 p.m. Inside the holiday-decorated IH Clubhouse will be face painting by Arlington High School seniors. The newly opened IH party room will feature Santa visits for children and be open for adults to tour. The plan is for the evening to culminate with a fireworks display donated by Kevin Bailey of Fireworks City in Lakeland.

HAPPENING IN LAKELAND

LIONS CLUB PECAN SALE THIS MONTH

The annual sale of Lions Club pecans is under way. Chair Bert Faller said these pecans are fresh off the tree this fall and the price is \$9 per bag. The following varieties are available until the first of 2016: Chocolate-covered, whole half pecans, roasted and salted, cinnamon covered, clusters and cashews.

They are available at the following locations on Canada Road in Lakeland: Lakeland Dry Cleaners, Trustmark Bank and Walgreen's. They also are for sale at Lakeland Elementary School.

If anyone has contacts or a store in another area and would like to sell pecans for the Lions Club, please call or direct all questions to Bert at 834-2938.

Lakeland Lions provide monetary and volunteer support to local schools and local sight-oriented education institutions. They also volunteer at City events including the recent Halloween Festival and the Fishing Rodeo in the spring.

Pecan sales are the major source of revenue for Lions Club projects during the year.

A DAY ON THE HILL

School Board members and students will travel to Nashville in February for the "A Day on the Hill" meeting with Tennessee legislators. The date for LSB is Feb. 16. Lakeland Elementary School students will go Feb. 10.

Robin Hogue Hughes
Attorney



8046 North Brother Blvd
Suite 103
Bartlett, TN 38133
901.674.7121 cell
901.333.1357 office
robin@closetrak.com

CloseTrak 
Closing & Title Services

www.CloseTrak.com



Christian Brothers
AUTOMOTIVE

Complete automotive repair
Free local shuttle service
Nice difference.®

**SERVING LAKELAND
SINCE 2006**
2859 N. Houston Levee Rd.
Memphis, TN 38016
(901) 221-0052



Mon - Fri: 7am - 6pm • Sat - Sun: Closed
ChristianBrothersAuto.com/HoustonLevee

LAKELAND ELEMENTARY SCHOOL PLAY

**"Aladdin" is coming to Lakeland Elementary School (LES)
Dec. 12 for its first-ever school play.**

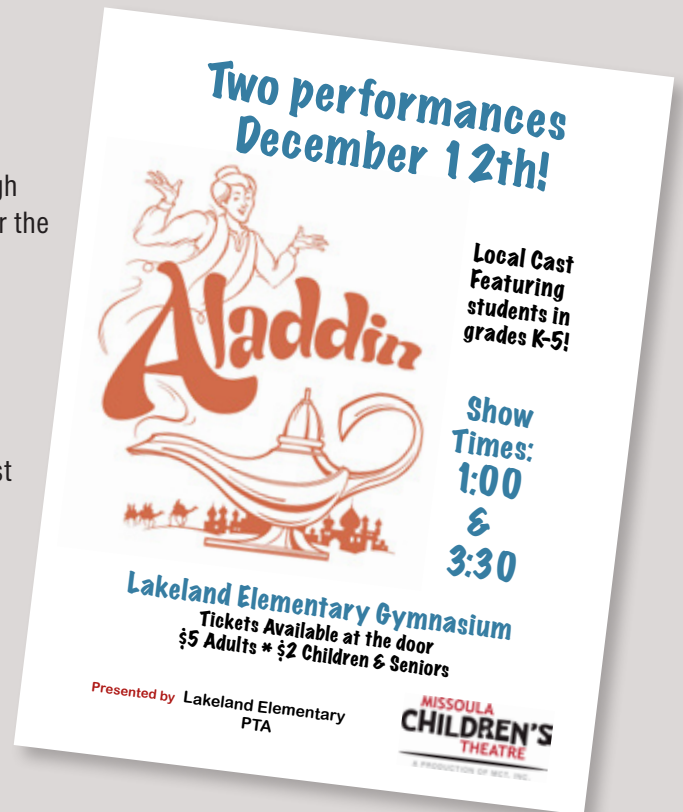
About 50 LES students will have parts in the musical coordinated through the Missoula Children's Theatre (MCT). Angie Farmer is the organizer for the production, funded through the LES PTA.

All MCT shows are original adaptations of classic children's stories and fairy tales. MCT is the nation's largest touring children's theatre and has been on the road from Montana to Japan over 40 years. According to Angela, a tour team will arrive in Lakeland with a set, lights, costumes, props and make-up. Everything to put on a play, she said, except the cast which will be LES students.

There will be two shows at 1 and 3:30 p.m. in the LES Gym. Tickets are \$5 for adults and \$2 for children and seniors.

Join Aladdin as he ventures into a swirling sandstorm of famous Arabian Tales ranging from Ali Baba to Sinbad the Sailor.

For more information, email angpatterson@hotmail.com.





Pet Health Center

9765 Hwy 64, Arlington TN 38002
(901) 382-0330
www.pethealthcenter.net

Mon-Fri 7:00 am – 6:00 pm
Saturday 7:00am – Noon
(Closed the last Saturday of the month)

VETERINARY SERVICES

PROFESSIONAL GROOMING

LUXURY BOARDING

PRESCRIPTION DIETS



20% OFF
your pet's first visit.

Excludes Grooming.
Cannot be combined with any other offer, coupon or discount.

10% DISCOUNT
for Military, Police, and Firefighters.

Excludes Grooming.
Cannot be combined with any other offer, coupon or discount.



Hello, neighbor!

William M Ashworth, Agent
9160 Highway 64
Lakeland, TN 38002
Bus: 901-800-1298
william@ashworthins.com

Please stop by and say, "Hi!"
I'm looking forward to serving your needs for insurance and financial services.
Like a good neighbor, State Farm is there.®
CALL ME TODAY.

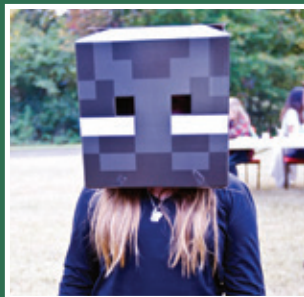


1001013.1
State Farm, Home Office, Bloomington, IL



LAKELAND HALLOWEEN FESTIVAL

Costumed children and parents attended the annual Lakeland Halloween Festival Oct. 24 at City Hall Park fields. Threatened by rainy weather, the skies cleared in time for the 5 p.m. opening and families filled the Park for candy-collecting, pumpkin selecting and painting and all sorts of contests and prizes. Many helped Robbie Spencer, director of the Parks and Recreation Department, to successfully plan the event: Belz Enterprises, Four- Way Insurance, All American, Inc., Fireworks City, A2H, Lakeland Lion's Club, Homer Skelton Ford of Millington, Trustmark Bank, Target, Republic Services, ATC Fitness, America's Incredible Pizza Co., Lenny's Sub Shop, Pink Palace Museum, Massage Paradise, Arlington Automotive, Sam's Club, Priddy Farms, Tom's Farm, Shelby Farms Park, Delta Blues Winery, Auto Zone and Arlington High School Art Department. Among vendors giving out candy and prizes were Pop-A-Lock, Four- Way Insurance and Bartlett Pediatric Dentistry. *Photos by Jim Willis.*



*Smile Design
Dentistry*

Quality Dentistry with Care

Dr. Trista Murphy, DDS
8125 Cordova Centre Drive,
Cordova, TN
901-624-6110



Your Neighborhood Pet Sitters

WE "PAWS" TO PLEASE

Joanna J. Harwood (JJ)
Richard Harwood

5335 Saffron Spring Dr.
Lakeland, TN 38002
Cell: 901-340-0261
Cell: 901-734-5665
Rich0302@gmail.com



INSIDE THE BOC (BOARD OF COMMISSIONERS) MEETINGS by Ken Glazer

- >> Lakeland commissioners approved new language for door-to-door solicitation that requires the City to create and maintain a “Do Not Knock” list of residents. On final reading Nov. 17, the BOC agreed that the language of the old ordinance was not enforceable and needed tweaking. The new ruling gives residents the option to contact City Hall and ask that their names be put on this new list, noting that no solicitors can come to their homes. When a vendor comes to City Hall for a permit, he/she will be given the new list. Violators of this ordinance can be fined \$50.
- >> At the same meeting the BOC agreed to annex some small areas of the 94-acres of the Lakeland Middle School property that were in the Lakeland reserve. Chris Patterson, city attorney, said this was a housekeeping matter and impacted a small portion of a driveway off Old Brownsville Road into the school property.
- >> At a Town Hall meeting prior to the November meeting, nine residents spoke of their concerns in the City, mainly no parking signs installed with no notice on Club View Cove. Jim Atkinson, city manager, acknowledged the City can do a better job on notifying residents of changes in their neighborhoods. Going forward, he said such matters could be handled by notifying residents by letter or having a public hearing about changes.
- >> In a report to commissioners, he addressed leaf pickup, tree-cutting, litter and Plantation Hills Park.
 - There is no loose leaf pickup this year. Republic will collect unlimited bags and branches every Friday citywide.
 - The tree and bush cutting throughout Lakeland has been done by Memphis Light, Gas and Water on their easements within 10-feet of power lines. He said the City has no control over the cutting but can talk to the utility about clean-up.
 - There are volunteer and staff teams now working on regular litter control. Volunteers collect trash on the second Wednesday and second Saturday of each month. Please contact City Hall to volunteer.
 - The Parks and Recreation Department is studying Plantation Hills Park and what to do with that area.
- >> Retiring commissioners Randy Nicholson and Gene Torrey were recognized Sept. 30 for their service with proclamations and a reception.
- >> A newly created road has been opened connecting Beverle Rivera Drive and Huff N Puff Road. A traffic signal was installed at Beverle Rivera and Canada Road. A second road will connect Beverle Rivera and Huff N Puff and the Canada Road entrance by Waffle House will be closed.
- >> Jim Atkinson, city manager, addressed physical changes planned to give City Hall added security. The lobby access to the rest of the building will be secured with badge readers and bollards will be added to the outside entrance.
- >> On Oct. 20, Michele Dial and Josh Roman became the newest commissioners when they took oaths of office alongside their families. A reception followed the formal procedure.
- >> Jim announced a new “Projects” report in spread-sheet format and will be available to the public. It will cover the high-priority projects and not the more than 150 projects that are active in any month.
- >> Lakeland is using its “black boxes” to collect data/count number and speeds of cars on streets and share this info with the Shelby County Sheriff’s Office (SCSO) to stop speeding. Canada Road and Davies Plantation are currently being watched by SCSO.
- >> Steve Snow was unanimously appointed to the Parks and Recreation/ Natural Resources Board.
- >> On a three to two vote, Josh was elected vice-chair of the BOC. Commissioners were selected to serve as liaisons to the City’s community boards.
- >> A free-standing emergency facility in Lakeland was proposed at the Nov. 5 work session by Baptist Memorial Health Care (BMHC) and Regional One Hospitals. The stand-alone emergency facility, open 24/7, would be located on U.S. Highway 64 just west of Canada Road. It would have pediatric and geriatric specialists and offer community wellness programs. Officials asked for and received a letter of

PROCLAMATIONS PRESENTED TO OUTGOING COMMISSIONERS

In their final meeting as commissioners for Lakeland, Randy Nicholson and Gene Torrey were recognized for their years of service to the City Sept. 30. Wyatt Bunker, mayor, presented both with proclamations and keys to the City and they were honored with a reception before the 5:30 meeting. Both are pictured with their families. *Photos by Jim Willis*



support they delivered to the state for approval Nov. 18. However, the hearing was deferred until January to allow the State Department of Licensure to clarify some issues, according to Gregory Duckett, senior vice president for BMHC.

- >> Jim reported on the success of the adult flag football program. There were ten teams of 12 players for the inaugural season, with five other teams turned down. Robbie Spencer, Parks and Recreation director, said two teams from the Collierville league asked to join for next season after hearing about the Lakeland league.
- >> Ginny Dunn, economic development coordinator for the Lakeland Chamber of Commerce, told BOC members the owners of three motels at the I-40 interchange want the occupancy tax to be reduced from 5 to 1.7 percent. According to Hinesh Patel with Motel 6, the reduction would help them compete with budget properties on Sycamore View in Memphis. Although Mayor Wyatt Bunker told the owners that the properties were currently eyesores, he said he and commissioners would be willing to meet with owners. Josh suggested they meet with the Lakeland Development Corporation. Current revenue from that tax is \$40,000 to \$50,000 per year.

The next BOC sessions are Dec. 3 and 10.

NEW TO BOC IN OCTOBER

Michele Dial and Josh Roman officially became Lakeland commissioners in an Oct. 20 ceremony. Both new commissioners are pictured with their families. *Photos by Jim Willis*



30+ Properties SOLD this year!!



15 year Lakeland Resident

Ask me about my staging and design team!

Your one stop shop for all of your Real Estate Needs!

#1 for a Reason!

Angie Kelley

Crye-Leike Realtors

#1 in the Mid South

#5 in the Nation

Call Today!

100% Customer Satisfaction Rating

Angie Kelley, ABR, CRS, e-PRO, SRS

Crye-Leike Realtors

Multi-Million Dollar Club

ABR-Accredited Buyers Representative

CRS-Certified Residential Specialist

e-Pro-Certified Internet Specialist

SRS-Sellers Representative Specialist

Relocation Certified

email: angie.kelley@crye-leike.com

Cell: 901-828-8919

Office: 901-872-1181

Fax: 901-271-9135

NEWSWORTHY AROUND LAKELAND

LSS SCHOOL BOARD MEMBERS Laura Harrison, Kevin Floyd, Kelley Hale and Matt Wright were awarded Level I School Board Member Status by the Tennessee School Boards Association at a Sept. 28 conference in Brighton TN.



Three **LAKELAND CUB SCOUTS** were among a Wolf Den that hiked and cleaned the IH Clubhouse Park and trails Oct. 11.

Scott Paul from Lakeland, one of the leaders, said 12 scouts and three leaders collected several bags of trash, cleared 1.5 miles of trails and took a large step toward earning their Cub Scout World Conservation Award. They are learning to think globally and act locally while respecting their environment.

The project was approved by Robbie Spencer, director of Lakeland Parks and Recreation Department.

The Lakeland students in the Den are Logan Paul, Jaylan Freeman (both students at Lakeland Elementary School) and Ben Lenox.

The Pack is chartered to St. Francis of Assisi Catholic Church in Cordova and monthly meetings are open to new Cub Scouts and leaders.

For additional information about the Den, contact Tim Sweatt, 482-3034.



Lakeland residents **AMY AND JIMMY WILKINS** were part of a \$100,000 check presentation to St. Jude Children's Research Hospital Oct. 13 donated from Pop-A-Lock franchises all over the country.

Amy said the money was raised during the company's annual summer convention. After the check presentation, tours were given of the Hospital.

The Wilkins' Lakeland-based business is a member of the Lakeland Chamber of Commerce and Jimmy is a board member.

The day before on Oct. 12, four Lakeland residents were among members of Corvetteforum.com who took 60 Corvettes to St. Jude for patients and families to see and climb inside and get the feel of the sports cars. They also donated \$149,000, the group's largest single contribution to date.



George and Joy McDowell and Jim and Sherrye Willis participated in the 13th year of giving which has reached a total of \$1 million donated to the Hospital. Jim operates Corvetteforum.com. Both couples are members of the Corvette Memphis Club.



ORANGETHEORY FITNESS officially opened for business Oct. 29 with a festive orange balloon entrance at their 2961 Canada Rd. location in Lakeland. Franchise owner Nancy Rose is pictured with her husband Jeff. The exercise center is open daily from 5 a.m. to 8 p.m. and only closed on Christmas. www.orangetheoryfitness.com/lakeland-tn or 302-6132.



Lakeland resident **MARA DANIELE** is an aspiring singer/songwriter who is across the Pond, studying songwriting in London at The Institute of Contemporary Music Performance.

The 18-year-old is the daughter of Kelly and Antonio Daniele of Lakeland and attended area schools — Lakeland Elementary, Arlington Middle and Arlington High. She plays guitar, flute, banjo and ukulele and considers her music to be retro folk.

She taught herself to play guitar and to write music and researched the best music programs, said Kelly. Because her father is from Italy, Mara was used to traveling abroad, added Kelly, so college in London was not intimidating. She is the middle of three children, all of whom have musical talent.

Mara auditioned at the FAME Recording Studios in Muscle Shoals, AL last year and was given a professionally mixed audio recording and video plus

lots of feedback. Since then, she released her own CD, Muscle Soles, and has a website, www.maradaniele.com.

When finished at The Institute, she will have a bachelor of arts in song writing.

STEVEN SNOW, a Lakeland resident since May 2014, has joined the Lakeland Currents editorial staff. He is a personal trainer and wellness consultant and is married to Dorris, a retired teacher, and they have Sophie the Maltese. When not walking or enjoying outdoor activities, he likes Sudoku and crossword puzzles. Steve has published articles in the Memphis Downtowner Magazine and for years wrote a regular column on fitness and recreation for The Sports Page, Move It and Memphis Health + Fitness magazines. He has also co-authored a short story recorded on audio tape. He was recently named to the Lakeland Parks/Natural Resources Board.

GINGER CALCOTE of Lakeland ran the New York Marathon Nov. 1, completing her goal of running all three U.S. Marathon Majors: Boston, Chicago and New York. She finished with a time of 3:46 which qualified her for Boston in 2017. She was accepted in the Boston 2016 marathon from a qualifying race in Galveston, TX where she won her age group. Her next goal is to compete a half ironman in 2016.

In a special ceremony Oct. 27, the **LAKELAND EDUCATION FOUNDATION** (LEF) awarded \$22,500 in grant money to Lakeland Elementary School teachers. The grants covered technology, math, science, English and music. Every K-5 student will benefit from this money. In the past one-year period of time the Foundation has provided over \$40,000 in grants to LES teachers, according to Cecil Tompkins, LEF chair. Teachers receiving the awards immediately began the process of ordering materials and computers in order to impact their students as soon as possible.

LEF has already begun to assess the needs at the new middle school scheduled to be open in two and a half years. With the added school the Foundation will need to increase the number of corporate donors and community involvement to successfully provide additional funds for the entire school system.

EMILY HARRELL was to start full time as the Lakeland City engineer this month. She was a staff engineer in Lakeland before taking a job in 2014 as a senior civil engineer in Collierville. She is a University of Memphis graduate. She and her husband Keith are Lakeland residents and have a son, 16-month-old Blake.



Serving Lakeland
since 1971

**FURNACE
TUNE-UP
\$67.00**

OFFER GOOD THROUGH JANUARY 30, 2016

901.373.3636 www.airmastersac.com



LAKELAND CHAMBER OF COMMERCE NEWS

by Ginny Dunn
Economic Development Coordinator

The Lakeland Chamber Awards Banquet will be at 6:30 p.m. Jan. 30 at The Refuge Church, 9817 Huff N Puff Rd. Entertainment will be The Dantones. This event is open to the public. Tickets are \$10 for Chamber members and \$20 for non-members and are available at www.mylakelandchamber.org or at the door.

Residents are reminded to vote for the best Christmas decorations at Lakeland businesses through Jan. 1, 2016. Go to the Chamber website and vote your choice. The first place winners in indoor and outdoor decorations will each receive a trophy and cash.

According to Ginny, a free-standing Starbucks Store is coming to the Country Bridge Shopping Center on U.S. Highway 64. There is also a possibility that Hollywood Feed will locate to the same shopping area.

The tethered hot air balloon ride that was canceled for bad weather in October has been rescheduled for April 3, 2016 at Delta Blues Winery. It will benefit the Lakeland Education Foundation and sponsors are Durham School Services, the Winery, Crossfit Mechanix and Ted Horrell and the Monday Night Card.

CRIME REPORT FOR LAKELAND — SCSO

From Sept. 21 to Oct. 18, total incidents decreased from 16 to 12. That represents three lower categories: Burglaries residential from two to zero; larceny other, four to one; and theft from vehicles, seven to five. However, two crime areas increased: theft from buildings, one to three; and vandalism misdemeanor/felony, two to three. Staying the same were aggravated assault, burglary business, burglary construction, motor vehicle thefts and robbery individual. Most crime during this reporting period occurred from 2 to 10 p.m. and most frequently on Sundays.

At the Nov. 5 BOC work session, Sgt. Jim Crabb with the SCSO said that during October there were two residential burglaries including one where a key was under the doormat, no motor vehicle thefts and four thefts from vehicles (two of those were unlocked.)

MEET A LAKELAND BUSINESS

by Steven Snow

Lakeland has a new neighbor. And, he's not just a new neighbor, he's a "good neighbor."

That is just another way of saying the new neighbor is State Farm Insurance agent William "Wil" Ashworth. He is such an enthusiastic proponent of the community that he moved here twice. Initially he chose to locate his business here in June 2012 because he considered the area "an excellent environment for a small business to grow and become involved in the community." And he has certainly followed through on becoming involved as he currently serves on the Board of the Lakeland Chamber of Commerce. Over the past three years his business has taken root and grown. That fact, along with the natural beauty of the City, motivated Wil to move his wife Mary and their one-year-old daughter Charley to the Cool Springs Subdivision last February. They were barely moved in and unpacked when they were joined by the latest addition to the Ashworth family, their son Maxwell, who was born in April.

A graduate of the University of Memphis, with a BS in accounting and a MS in finance, real estate and insurance, Wil has both the background and experience to fully serve his clients' needs. His State Farm agency, while offering the standard home, auto and life insurance policies, also has many innovative financial products for the ever-changing investment market.

When not busy meeting with his clients or spending time with his family, Wil can be found enjoying an afternoon on the golf course or weekends off in the deep woods following his other interest, hunting. He is also a big fan of his U of M Tiger basketball and football teams.

Wil's office is located at the Shops of Stonebridge, 9160 US-64 suite 4. Business hours are 8 a.m.-5 p.m. Monday-Friday and Saturday by appointment. Wil can be reached at 800-1298 or william.ashworth.tfry@statefarm.com. The company web site is: www.ashworthins.com His Facebook is: William Ashworth — State Farm Insurance Agency William Ashworth. Wil is a regular advertiser in Lakeland Currents and his current ad is on page 6 in this issue.

Support Lakeland businesses and business owners



MCCABE PAINTING
INTERIOR & EXTERIOR
WALLPAPER REMOVAL

JOEL MCCABE
901-829-3008
901-382-3886
sjmccabe00@yahoo.com



LAKELAND PARKS AND RECREATION

City Hall: 10001 Highway 70. Visit www.lakelandtn.gov/parksandrec or 867-2717 for the latest information.

Robbie Spencer, *Parks & Recreation Director*, rspencer@lakelandtn.org

YOUTH FOOTBALL

A youth football league playing tackle football has been proposed by Robbie

Spencer, director of the Parks and Recreation Department. Robbie presented the idea to the Board of Commissioners at the November work session. He said a high-quality program which would furnish helmets, pads and uniforms would require start-up monies of \$47,500. Cost could be less depending on fees assessed to players. The league for grades 3-8 would be in conjunction with Bartlett and Arlington. It will be discussed by the BOC this month.

YOUTH BASKETBALL

Robbie also said the currently underway Lakeland youth basketball program is part of the Memphis Grizzlies support program. Each player

will receive a reversible numbered jersey and a free ticket to a Grizzlies game. Coaches will be invited to a coaching clinic at the Grizzlies practice court at FedEx Forum.

ADULT BASKETBALL

Through Dec. 16, sign up at www.LakelandTN.gov/leagues or in person at City Hall. Cost is \$600 per team (maximum of 10). Fee includes full uniform, supervisors and referees. Games will be played at Lakeland Elementary School and begin Jan. 4, 2016.

Some features this year include: Stat keeping, website for league leaders, individual and team awards and more. The league will consist of a 12-game season with playoffs and a championship. Each player will receive a custom team jersey and shorts. Contact Robbie Spencer for more information.



LAKELAND SENIOR PROGRAMS 55+

*Lakeland Senior Center (LSC): 4527 Canada Rd.; IH Clubhouse: 4553 Canada Rd.
746-8195 10 a.m. - p.m. M-F; 867-2717 after hours*

Marilyn Parker, *Senior Center Manager*, mparker@lakelandtn.org

Lakeland welcomes all local area adults 55+ to the Center, located on the grounds of IH Park. It is a gathering place for friends to enjoy camaraderie through games, programs, seminars and special events. Visit www.LakelandTN.gov/seniors, watch Comcast channel 19 or drop by the Senior Center for a monthly calendar and info on Bunco, dominoes, Mah-Jong, Silver Sneakers and other activities like coffee and chat, piano and popcorn and bingo. Contact Marilyn to be on the email or snail mail list.

SENIORS 55+ CHRISTMAS DINNER 6-8 p.m., Dec. 11

You're invited to a Christmas Dinner featuring spiral-sliced ham (or baked and fried chicken), cranberry sauce, cornbread dressing and gravy, sweet potato casserole, broccoli and cheese casserole, green bean casserole, rolls, pecan and pumpkin pies and drinks. It will be catered by Amber Lovell with Pink Flamingo Catering and is \$10 per person, payable at the door. The Steppin' Out Dancers will be the evening's entertainment. Reservations due Dec. 4 by calling 867-2717 or email kodom@lakelandtn.org. Bring your friends.

NEW YEAR'S TOAST 11 a.m. to noon, Dec. 31

Senior Center Director Marilyn Parker, who is completing her first year as Senior Center director, wants to thank those who covered the desk at the Senior Center, sent cards, money, well wishes, made calls or came by to check on her during her surgery and recovery. "Lakeland has beautiful people living here and you are awesome," she said.

DON'T LIVE IN PAIN!

Why go any further?...Come in and support your Neighborhood Chiropractor in Lakeland

OPEN Mon-Sat

- Low Back Pain
- Sciatica
- Headaches
- Neck Pain / Stiffness
- Muscle Pain and Spasms
- Numbness / Tingling
- Joint Pain or Stiffness
- Carpal Tunnel Syndrome
- TMJ Disorders

LAKELAND CHIROPRACTIC CLINIC

8950 Hwy. 64, Ste. 109
Lakeland, TN 38002
901.388.0737
www.lakeland-chiropractic.com

LSB (LAKELAND SCHOOL BOARD) UPDATE

by Jay Dorning and Carl Helton

Included in YOUR new Lakeland Middle School (LMS):

- A full-sized gym with wood floors and two sets of bleachers.
- Art classrooms, science labs, makers room with 3-D printer.
- Community access to the library.
- Two floors and 112,186 square feet.
- And maybe, just maybe a full-size practice field.

The schematic design of the middle school was presented to the Board Nov. 9 by planners and engineers from A2H and Renaissance Group, two Lakeland businesses playing a major role in the new school.

The new facility will be located on 94-acres at U.S. Highway 70 and Canada Road, purchased by the Lakeland School System (LSS) in late October. The school is expected to be open in August 2018. Construction should start late spring or early summer 2016.

Along with representatives from A2H and Renaissance Group, Dr. Ted Horrell, superintendent, reviewed the school plans at the Nov. 9 board meeting. Front elevations of the new school are expected in December.

In other news from fall LSB meetings, preparation has started to replace the roof and HVAC units at Lakeland Elementary School. Work is to start at the end of the current school year and expected to be finished by July 31, 2016.

Kevin Floyd and Laura Harrison were re-elected chair and vice-chair of LSB; Tennessee Legislative Network (TLN) representatives will be Geoff Hicks and Teresa Henry. Kevin and Geoff are the delegates to the TSBA Tennessee School Board Association (TSBA) general assembly.

The Lakeland Extended Activities Program (LEAP) is very successful and enrollment is up, according to Ted. A laptop cart was ordered for use by those students. Ted also gave a financial report on the cafeteria, saying that year-to-date, the cafeteria is \$4,000 in the black at the end of October, compared to a year ago when it had a \$7,709 deficit.

At the October meeting, Sen. Mark Norris came to swear in new Board member Geoff and returning member Teresa Henry. David Reaves, Shelby County Commissioner, presented the school system a proclamation for being named an Exemplary School District. Teresa and Geoff were presented certificates of election.

Starting in October, Shelby County Sheriff's Department deputies were asked to be present at all meetings and work sessions.

Ted complimented Lakeland Elementary School Principal Joretha Lockhart and her staff for an impressive Veterans Day program.

The LES PTA netted \$30,000 from the Boosterthon fundraiser.

The first of two employee health care centers opened in Collierville with a second one opening in Bartlett in 2016. Care4Us Health Centers provide primary and preventive health care to employees and dependents of city employees in Bartlett, Collierville and Lakeland and school employees in Arlington, Bartlett, Collierville, Lakeland and Millington.

Dr. Horrell also reported that \$40,000 will be transferred for teachers and staff to get a performance bonus. This is not new money but a transfer of funds. This will be for the 2014-15 school year and only to those contracted with the school last year will be eligible.



On Oct. 5, Geoff Hicks officially became a member of the Lakeland School Board. He and returning school board member Teresa Henry were sworn in by Sen. Mark Norris (R Collierville). Both are pictured with Sen. Norris and their families and were selected in September elections.



The same night, Shelby County Commissioner David Reaves (fourth from right) presented a proclamation to the Lakeland School System for being named an Exemplary School System. Along with LSB members are Joretha Lockhart, principal of LES, and Sen. Mark Norris.

Photos by Jim Willis

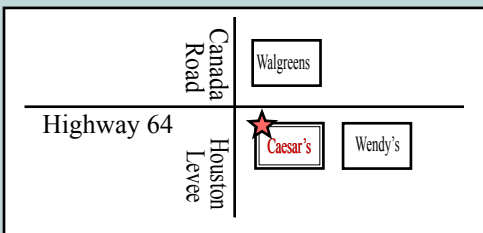
TRAFFIC-STOPPING BEAM PLACEMENT

In the late evening hours of Nov. 2, miles of cars and trucks waited to exit at Canada Road while enormous beams were loaded and placed at the overpass. The work closed eastbound traffic overnight. *Photos by Ken Glazer and Jim Willis.*



CAESAR'S WINE & LIQUOR

Locally owned and operated



9959 Highway 64
901-382-3212

We will match all Memphis competitors' ads.

*We now have a very large selection of wine accessories,
party supplies and bar equipment*

Monday – Ladies' Day 10% off all wine
Tuesday – Case Day 15% off all cases of wine
Wednesday – Man Day 10% off 750 ml bottles
and Premium cigars (excludes sale items)



**NEW Walk-in Humidor
with BIG Selection**

Worth a Special Visit!



GEOFF HICKS

Lakeland School Board

As the newest member of the Lakeland School Board (LSB) I'm excited and enthusiastic to be part of a group that is united in its purpose. In late October, Lakeland reached a milestone in its journey to someday have a complete K-12 school system. We completed the purchase of 94 beautiful acres that

are the future home of our middle and high schools. Though our short-term plan calls for a middle school only, when the time is right we are well-positioned to make a high school a reality. In early November, as we stood on the property and posed for pictures with a member of the Jones family (the previous owners of the property), I couldn't help but picture a handsome new school surrounded by natural landscapes. But the process is still in its early stages. It will take patience and vigilance to make sure it's done right.

During November's board meeting, Superintendent Dr. Ted Horrell presented the "schematic" or layout of the new middle school. Dr. Jim Mitchell from Southern Educational Strategies as well as representatives from Lakeland-based A2H and Renaissance Group were on hand to field more in-depth questions about the project. The two-story structure will accommodate 900 students and is designed with future expansion in mind. Items reviewed by the board ranged from types and numbers of classrooms to the size and seating in the gym. Dr. Horrell pointed out numerous features that showed off the design's efficiency and forethought. LSB Chairman Kevin Floyd commended the design team and the rest of the board echoed his sentiments. During the December work session we will review the "elevations" – the general appearance of the school on the outside.

Other than progress on the new middle school, here are a few highlights from the Lakeland School System: First, the Boosterthon fundraiser was a tremendous success, raising over \$30,000 for the Lakeland Elementary School (LES) PTA. Second, in late October the Lakeland Education Foundation awarded grants totaling \$22,000 for classroom enhancements to LES. Teacher recipients received funding for items ranging from tablet computers to a greenhouse. And third, LES held its annual salute to veterans program in early November. Though I am proud of my military service, I am prouder that we teach our children to honor all those who have served. Service, in all its forms, is what makes our country great.



THOMAS SKEHAN

Lakeland City Planner

The City's Planning Department provides planning, zoning, development review, permitting and code enforcement. After a few years of little development activity, things are beginning to pick up here in Lakeland. To date, three site plans, one rezoning case and a preliminary plat approval that involved 156 single-family

lots have been reviewed by my department and approved by either the Municipal Planning Commission (MPC) or the Board of Commissioners (BOC).

Commercial Development

A long standing business in Lakeland will be getting an extreme makeover. In addition to a new site plan layout with access off of Mall Boulevard versus Canada Road, the Exxon Station will be getting a facelift. New masonry will adorn the facility making for a more attractive storefront.



Courtesy of City Hall

Located on U.S. Highway 64 east of the Walgreens, Krystal applied for and received approval for its first location in Lakeland. The site plan was revised due to unexpected conditions. The revision was approved and we are awaiting the filing of their building permit.



Courtesy of City Hall

Residential Development

Oakwood Grove was recently granted tentative approval for its 156-lot single family home subdivision, located just west of Chambers Chapel Road. The price point for the new homes marketed by Hallmark Builders is estimated in the \$375,000 to \$435,000 range. Two large open space areas, street trees and sidewalks will adorn the neighborhood, enhancing its appeal.

The Planning Department reviewed the rezoning of 126 acres from R1 to R1, R2, OS3 and OS5. This development is just south of Oakwood Grove and was approved at November's MPC meeting. The MPC's recommendation will be forwarded to the BOC for action. Readings on this item will be on the BOC's December and January agendas with the public hearing scheduled for January's regular BOC meeting.

Other Developments

Residents traveling U.S. Highway 70 will soon notice site preparation work for Kensington Manor. This 103 single family lot planned development was approved in 2008. New Regency Homes has recently purchased the property and hopes to complete the project by 2018. Tangentially, this development will address one of the safety issues for commuters traveling east on Highway 70. This section of the highway has limited

line-of-sight problems making it sometimes dangerous to enter or exit the road. An entrance lane will be installed for the subdivision and Evergreen Street will no longer connect with the highway. Instead, a cul-de-sac will terminate Evergreen before reaching the highway.

It appears the economy has picked up steam and developers will soon propose new ideas or implement previously approved plans. Keeping the public's expectation of the type and quality of development in mind is a primary role for the city planner. All too often, the public voice heard at city hall is "We don't like..." This is understandable. However, if what is being proposed meets all the development regulations, it is difficult to deny or recommend against a subdivision, site plan or design proposal presented for review and action. The public should become involved in the planning process (reviewing our past, present and future and communicating vision and expectations) in order to narrow the gap between what is allowed and what is desired. Lakeland offers ample opportunity to its residents. All commission meetings are well advertised and each body gives the public time to voice concerns. Why? Lakeland wants to hear from all community stakeholders. Why now? Development is on the increase, code enforcement is taking on a new approach and Lakeland is preparing for the construction of a new middle school. Coupled with the completion of the new interstate interchange, a new alignment to Canada Road and the potential for an open air mall where the old Outlet Mall stands, Lakeland is poised for a diversified economic base and, therefore a brighter future.

If you have any planning questions or concerns and wish to contact me, I can be reached at tskehan@lakelandtn.org or 867-5401.

LAKELAND NEIGHBORHOOD REPORTS, NEWS

GARNER LAKE ASSOCIATION

Dennis Sossaman with Garner Lake Association (GLA) reminds residents that blowing leaves into the lake is not permitted by individuals or lawn services. "Many of our coves are already quite shallow. Blowing leaves into the lake greatly worsens that condition. Also, street gutters drain directly into the lake and contribute significantly to pollution of the lake," he said. For no additional fee, Republic will pick up unlimited bags of leaves, up to 35 pounds, and small limbs in stacks up to 35 pounds on Fridays. To join GLA visit our website garnerlake.com. Cost is \$20 per year.

Learning Tree Daycare Center Provides Childcare for Ages 6 Weeks to 12 Years Old Plus Before & After School Care

If you have children aged 6 weeks to 12 years old and are searching for professional, reliable childcare, check out the Learning Tree Daycare location in Lakeland. We maintain a clean, colorful and safe environment for your child that helps develop trust and encourages feelings of independence and willingness to explore.

- ✓ **Open year-round, not just when school is in session** (There are 25 days each year when Learning Tree Daycare is open, but schools are closed.)
- ✓ **Supervised care for your child starting as early as 6:30 a.m.**
- ✓ **We accept children from 6 weeks - 12 years old** (Learning Tree provides one stop for drop-off and pick-up of all your children.)
- ✓ **Safe, convenient transportation services available to area schools**
- ✓ **Full-time summer camp programs available** (Snacks, lunch and field trips are included in tuition.)
- ✓ **Morning and afternoon snacks plus lunch**
- ✓ **Locally owned and operated by Lakeland residents**
- ✓ **Three Star Rating** (Highest rating awarded by the Tennessee Department of Human Services)
- ✓ **We've served the Lakeland community for over 10 years and the Memphis area for over 20 years!**

SPECIAL OFFER
Present this ad at registration and we'll waive the registration fee up to a \$75 value!



**Learning Tree
Daycare Center**
9667 Davies Plantation ★ Lakeland
(901) 388-6388



www.learningtreedaycare.com



LAKELAND: YOUR CITY, YOUR HISTORY

by Alexa Tutor

Back in the late 1950s, a man traveled with his family to Ruby Falls, TN (outside of Chattanooga) and had a vision: He wanted to build an amusement park that would rival Disneyland, just north of Memphis by the newly built interstate system. That man was Louis Garner and he started to make his dream a reality in 1959, first by purchasing 1,200 acres of land along Canada Road. He then spent almost two years preparing the land by building a large dam, digging artesian wells and filling the lake. He named the lake Garner Lake, and it became (and still is) the largest lake in Shelby County at 235 acres. In 1960, he bought a cable car sky ride that had been used at the World's Fair in Brussels for a price of \$250,000.

By June 2, 1961 the park opened! While it didn't boast all of the things Mr. Garner had promised — a 180-foot observation tower with a restaurant on top, a horse racing track, a large outdoor amphitheater, a lighted 18-hole golf course — it became a favorite for children and adults alike. The aforementioned cable car ride traveled high in the sky across the lake, there were playgrounds with slides proudly displaying "Yea Lakeland," two trains (the Huff-n-Puff, which we talked about last time, and a smaller train), a paddle wheeler named the Roberta E. Lee, a mini-golf course and more! The park hosted several different attractions. One I found particularly interesting was a woman named Ella Carver, who, at the age of 70, set herself on fire and dove from a 90-foot tower into a flame-covered pool!

"The world's largest playground" boomed, but wasn't without its fair share of mishaps. In 1968, a windstorm caused a malfunction with the sky ride, and passengers were stuck in the air for about nine hours! In

the mid-1970s, the park suffered two tragic losses when two men drowned in the lake at different dates. Undoubtedly, the biggest hit to Lakeland came in 1976 with the opening of Libertyland, the amusement park in the heart of Memphis. Lakeland could not keep up, and the park was closed by 1978. An area that was supposed to have had cottages for rental was replaced by upscale residential homes. Louis sold the park equipment, parceled off the land into lots for homes and moved to Florida in 1995.

Do you have any fun memories about Lakeland you would like to share? E-mail me at: alexaktutor@gmail.com.





RIGHT LANDSCAPINGS

*Commercial/Residential
Family owned and operated*

Lawn maintenance, shrubs and trees, flowerbeds and hardscapes

20% Off With Any Prepaid Annual Property Maintenance Agreement Over \$1,000.00



We have grown and we want to take care of your home.

(901) 490-4983

www.wrightlandscapings.com



audra lowe

organic hair color • dry haircutting
extensions • waxing

2981 canada rd
lakeland, tn 38002
901.413.8113
audra.style@gmail.com

CALENDAR: BOARD OF COMMISSIONERS (BOC), LAKELAND SCHOOL BOARD (LSB)

DECEMBER

- 4: City Christmas Festival and Tree Lighting
6-8:30 p.m. IH Park
- 7: LSB work session
- 8: Parks meeting
- 10: BOC regular meeting
- 11: Senior 55+ Christmas Dinner
6-8 p.m.
- 12: Aladdin, an LES Production
1-3:30 p.m.
- 14: LSB regular meeting
- 17: MPC meeting
- 21-1/1: Winter break LES
- 24-25: City Hall, Senior Center closed for Christmas
- 31: New Year's Toast
11 a.m.-Noon

JANUARY

- 1: City Hall, Senior Center closed for the holiday
- 5: Students return to school
- 18: MLK Jr. Day — school holiday
- 30: Lakeland Chamber Awards Banquet
6:30 p.m. the Refuge Church

FEBRUARY

- 10: Day on the Hill
Nashville, TN, LES Students
- 12: Professional Day — LES school holiday
- 15: President's Day — school holiday
- 16: Day on the Hill
Nashville, TN, LSB

MARCH

- 21-25: Spring Break



www.groomeco.com

Office: 901-465-7172
Fax: 901-273-1611
Cell: 901-461-5446
7390 Hwy 64
Oakland, TN 38060

Jeanna Groome
Principle Broker
groomeco1@comcast.net

SELL OR LEASE YOUR HOME

Compare Our Service & Rates

**Hundreds of Satisfied Clients

**Millions of Dollars in Sales

Your Neighbor in Oakwood

JERRY CHISM 901-490-7541

Owner/Broker 20 Years Experience

DOGWOOD REALTY 901-373-8009

Website: www.dogwoodmemphis.com

E-mail: jerry@dogwoodmemphis.com



Jerry Chism

Proudly serving & working in Lakeland.



Renaissance Group

architecture ■ engineering ■ planning ■ interiors

What you value is our priority.

9700 Village Circle, Ste 100, Lakeland, TN 38002
(p) 901.332.5533 www.rgroup.biz



**Lakeland
Education
Foundation**

*Quality Education,
A Community Commitment*

**Join –
and help
create a
better future.**

Visit and support –

www.lakelandschools.org

This space sponsored by Mitzi and Phil Pilcher

CITY CODES KEEP LAKELAND LOOKING GOOD

Code enforcement has a new face in Lakeland with newly hired John Hightower, a native of Pennsylvania and retired police officer.

Selected in September for the full-time position, John is enforcing some ordinances that many in Lakeland may not know exist.

Take for example the Republic trash receptacles, of which every resident should have three in red, blue and green. By definition of the ordinance, said John, they should be stored out of sight when it is not pick-up day. "This is one of the big issues," he said. "A lot of residents complain they can see their neighbor's trash cans. I get calls from HOA presidents." He said this applies more to subdivisions rather than rural areas with multi acres. These receptacles should be stored in garages, the rear of a house, or in a space not visible from the street. On a scheduled pick-up day, receptacles are allowed 12 hours before the scheduled time and 12 hours past the actual pickup time, he noted. And don't put them in the storm drain runoff area.

Another big thing is tree limbs and yard debris at the curb. "Many don't know that you have to schedule a pickup appointment with Republic (for large items) or have another company haul the yard waste," he said.

Other frequent offenses are tall grass and inoperable vehicles in driveways. "These are cars that don't run, maybe have flat tires and

a thick layer of dirt," he said. Also of concern in neighborhoods are recreational vehicles parked in driveways, such as ATVs, boats, trailers and campers. "These should be stored out of view from the street," he said.

And what are the penalties for failing to comply to the City regulations? John said a courtesy citation is issued giving the owner 10 days to two weeks to respond. Next comes a certified letter from the City. If the infraction is serious and the warnings ignored, the owner can be summoned to Environmental Court. "You're talking about almost six weeks and some fail to comply."

Thomas Skehan, city planning director, said John will be proactive and reactive in his duties. He said the "citations" issued are akin to warning tickets. "They are meant to inform the public, to engage the public in civil conversation and, if necessary, document the complaint history if the problem is not resolved and the case ends up in environmental court."

John spends most of his days in the field and can be reached at 867-2717 or jhighsmith@lakelandtn.org.

He retired from police work after 22 years and moved to Memphis three years ago with his wife.



SALON ALLURE

9020 Highway 64 #108 • Lakeland
www.salonalluretn.com
www.facebook.com/salonalluretn

Hours:
Tues 10am - 6pm
Wed 10am - 5pm
Thurs 10am - 7pm
Fri 10am - 5pm
Sat 10am - 4pm
382-1450

Happy Holidays

Please welcome our new stylist:
Heleema Atallah

 Serving Lakeland, Arlington, Oakland, Eads, Cordova, Bartlett & Memphis Area • Appointments Suggested

VETERAN'S DAY

Lakeland Elementary School honored veterans and celebrated with two programs Nov. 6. Shelby County Mayor Mark Luttrell was guest speaker at the earlier program featuring grades 3-5. The younger students had a program at 11:30 a.m. Musical entertainment was provided the Arlington High School Wind Ensemble and the Lakeland Glee Club. New student Camden Korsmo read a Veterans Day tribute poem and Graham Hutchens gave the Pledge of Allegiance.



Full service real estate closing and title agency since 1978

- Residential Real Estate Closings
- Refinances, Leases, Contracts, etc.
- For Sale by Owner
- Remote closing services – we come to you
- REO Property Closings, Relocations

**Call today
for more
information**

901-382-0470

6510 Stage Road, Suite 1, Bartlett, TN 38134

www.edcotitle.com

Nancy Highland, D.D.S. Smile Enhancement Dental Center

9621 Davies Plantation East
Lakeland, TN 38002

Phone: 901-383-2345

e-mail: info@smileedc.com



Serving the Lakeland Community for Over 20 Years

For all the reasons you need a bank, come to Trustmark, one of the South's oldest and strongest banks. Trustmark combines the strength of a regional bank with the personal touch of a neighborhood bank. We know that's the way you like to do business because, after all, we've been your neighborhood bank in Lakeland since we opened our doors.



Nancy Harrell
Assistant Vice President
and Branch Manager

Let Nancy Harrell and her staff put our experience to work for you.

3714 Canada Rd. 901-377-3868

www.trustmark.com

Member
FDIC



**Trustmark
Bank**

People you trust. Advice that works.



GRAND OPENING!

The stage at IH Park was opened Nov. 17 with City officials, music, Central Barbecue food truck, an inflatable for children and free hot chocolate. Ted Horrell (Lakeland school superintendent) and the Monday Night Card entertained along with The Dantones. (featuring drummer Jim Atkinson, City manager).

Conceived by Mayor Wyatt Bunker and retired Commissioner Gene Torrey, the stage will be the venue for a summer concert series in 2016.

Photos by Jim Willis.



**IT'S EASY TO
BREAK UP WITH
CABLE.**

**GETTING
DIRECTV
IS EVEN EASIER**

**PACKAGE OFFERS
STARTING AT:**

\$29⁹⁹/MONTH
FOR 12 MONTHS
Plus add'l fees.

**ONLY
\$19⁹⁹*
mo.**

SELECT™ PACKAGE

Enrollment in Auto Bill Pay is required.

ALL DIRECTV OFFERS REQUIRE 24-MONTH AGREEMENT.**

CALL NOW and ask about Next Day Installation.

SUMMER WIRELESS
Your local DIRECTV Retailer
(901) 302-9906

Offers valid through 5/27/15. Credit card required [except in MA & PA]. New approved customers only (lease required). \$19.95 Handling & Delivery fee may apply. Applicable use tax adjustment may apply on the retail value of the installation. Hardware available separately. Programming, pricing and offers are subject to change and may vary in certain markets. Some offers may not be available through all channels and in select areas.

*BILL CREDIT/PROGRAMMING OFFER: IF BY THE END OF PROMOTIONAL PRICE PERIOD(S) CUSTOMER DOES NOT CONTACT DIRECTV TO CHANGE SERVICE THEN ALL SERVICES WILL AUTOMATICALLY CONTINUE AT THE THEN-PREVAILING RATES. LIMIT ONE PROGRAMMING OFFER PER ACCOUNT. Featured package/service names and current prices: SELECT \$49.99/mo. Prices include the following instant bill credits for first 12 months: \$30 for SELECT Package. Customer must, at point of sale, activate and maintain a qualifying programming package and Auto Bill Pay. Account must be in "good standing" as determined by DIRECTV in its sole discretion to remain eligible for all offers.

**24-MONTH AGREEMENT: EARLY CANCELLATION WILL RESULT IN A FEE OF \$20/MONTH FOR EACH REMAINING MONTH. Must maintain 24 consecutive months of any DIRECTV base programming package (\$29.99/mo. or above) or any qualifying international service bundle. Advanced Receiver fee (\$15/mo.) required for all HD DVRs. TMS service fee (\$5/mo.) required for TMS HD DVR from DIRECTV lease. There is a fee of \$4.50/mo. for each receiver and/or Genie Mini/DIRECTV Ready TV device on your account. NON-ACTIVATION CHARGE OF \$150 PER RECEIVER MAY APPLY. ALL EQUIPMENT (EXCLUDING GENIE DEVICE) IS LEASED AND MUST BE RETURNED TO DIRECTV UPON CANCELLATION. OR UNRETURNED EQUIPMENT FEES APPLY. VISIT directv.com/legal OR CALL 1-800-DIRECTV FOR DETAILS. INSTALLATION: Standard professional installation in up to four rooms only. Custom installation extra.

To access HD programming, HD television required. Number of HD channels based on package selection. Eligibility for local channels based on service address. Not all networks available in all markets. Programming, pricing, terms and conditions subject to change at any time. Pricing residential. Taxes not included. Receipt of DIRECTV programming subject to DIRECTV Customer Agreement; copy provided at directv.com/legal and in order confirmation. ©2015 DIRECTV. DIRECTV and the Cyclone Design logo and SELECT are trademarks of DIRECTV, LLC. All other trademarks and service marks are the property of their respective owners.

Christian Brothers
AUTOMOTIVE®

Nice difference.®

2859 N. Houston Levee Rd.
Memphis, TN 38016

ChristianBrothersAuto.com

10% OFF

Any Oil Change Package

Not valid with any other offer.
Expires 1/31/2016

\$20^{OFF}

Any Repair or Service

Not valid with any other offer.
Expires 1/31/2016

(901) 221-0052

Mon - Fri: 7am - 6pm • Sat - Sun: Closed



Warmest Wishes for the Holiday Season



BILLY RODGERS
Lakeland Real Estate Done Right

Mobile: (901) 569-2274

Office: (901) 754-0800

billy.rodgers@crye-leike.com

www.billyrodgers.com

CRYE-LEIKE®, REALTORS®



Drive home the savings.

Don Stewart, Agent
9998 Hwy 64
Lakeland, TN 38002
Bus: 901-753-5441
don@donstewartinsurance.com

Car and home combo.

Combine your homeowners and car policies and save big-time.

Like a good neighbor, State Farm is there.®

CALL ME TODAY.



0901133.1

State Farm Mutual Automobile Insurance Company; State Farm Indemnity Company; State Farm Fire and Casualty Company; State Farm General Insurance Company; Bloomington, IL

LAKELAND AREA'S ONLY FULL-SERVICE EYE DOCTOR!

We are proud to announce



OPTOMETRY GROUP

YOUR EYES. OUR PASSION.

eyewear available now!

**STARING AT DIGITAL
DEVICES ALL DAY?**



Ask Dr. Powell about lens dryness and how a
FREE* trial of Bausch + Lomb ULTRA®
contact lenses can help.



MoistureSeal® technology helps:

- 1. Prevent lens dryness¹
- 2. Maintain moisture for a full 16 hours²
- 3. Provide superior end-of-day vision** for digital device users³

BAUSCH + LOMB
See better. Live better.



Dr. Bart Powell

**2961 Canada Road,
Suite 104**

Lakeland, TN 38002

901-380-2020

Red eyes Glaucoma
Dry eyes Cataracts
LASIK management
Contact lenses

Call Today!

*An eye exam may be necessary before receiving your free trial, and the free trial offer does not include the cost of an eye examination or any other professional fees.

**Among the leading silicone hydrogel lenses.

References: 1. Results of an in vitro study in which Bausch + Lomb ULTRA, ACUVUE OASYS, AIR OPTIX AQUA, and Biotrinity contact lenses were placed on a model cornea with 0.5µm of spherical aberration. Images were acquired every 10 seconds over 30 seconds and analyzed using pattern matching algorithms. A score for each 10-second interval is determined by comparing how closely the test image matches the true D image. Mean scores over the 30-second interval were determined and compared. 2. Data on file, Bausch + Lomb Incorporated, Rochester, NY. 2013. 3. Results from a 22 investigator multi-site study of Bausch + Lomb ULTRA contact lenses with MoistureSeal technology, on 327 current silicone hydrogel lens wearers. After 7 days of wear, subjects completed an online survey. Subjects rated performance across a range of attributes. Preference comparisons represent only those subjects expressing a preference. Ratio is based on the average across the silicone hydrogel lenses represented in the study.

Distributed by Bausch + Lomb, a Division of Bausch + Lomb Pharmaceuticals North America LLC, Bridgewater, NJ.

© 2013 Bausch + Lomb Incorporated. Bausch + Lomb ULTRA and MoistureSeal are trademarks of Bausch + Lomb Incorporated or its affiliates. All other brand/product names are trademarks of their respective owners. PND0162 US/2/15/0090